



Jeffrey L. Day, FAIA

Jeff is founding principal of Actual Architecture Co. and Killinger Professor of Architecture & Landscape Architecture at the University of Nebraska-Lincoln. At UNL Jeff runs FACT, an award-winning, academic/professional collaborative design lab. Previously, Jeff practiced architecture as Min | Day Omaha and was the Director of the Architecture Program at UNL. Jeff is a board member of the Association of Collegiate Schools of Architecture (ACSA) and serves on the boards of several nonprofits in the Midwest. Jeff and his work are widely published and have garnered numerous awards, including his elevation to the AIA College of Fellows in 2019.

Actual Architecture Co.

1105 Howard Street #102
Omaha, NE 68102
402.551.0306
www.actual.ac

15 June 2021

Sara Kay, Hon. AIA
Executive Director | Chairperson AIA Nebraska Honors
AIA Nebraska
335 North 8th Street, Suite A
Lincoln, NE 68508

RE: HDR Great Plains Studio(s) AIA NE Firm of the Year

Dear Sara and members of the jury,

It is with great respect and admiration that I write this letter of nomination for HDR's Great Plains Studio(s) as AIA Nebraska's Firm of the Year for 2021. Over the last fifteen years I have watched as several of my colleagues transformed the practice by establishing a studio culture valuing design, education, and community. The practice challenges the notion a large firm is a "service firm", producing workable but derivative projects in the background of the discipline. Instead, HDR's Great Plains Studio(s) push the limits of architecture of all types and scales while positively impacting communities and creating architecture that rightfully garners international recognition.

The design leaders of HDR's Great plains Studio(s) set the goal to practice what Neil Denari termed "critically acceptable architecture". Quietly, the multi-disciplinary studios have earned National Design Awards from the Institute for Interior Architecture and Regional & Urban Design. To date the practice has received three national AIA AAH awards, fifteen Central States Region design awards and over forty AIA Nebraska Design Awards more than half of which received the distinction of honor. These team achievements are paralleled by individual honors including two national Young Architect Awards, two elevations to the College of Fellows, and the state's highest honor, the Harry Cunningham Gold Medal.

Fundamental to HDR's Great Plains Studio(s) is the belief that a great design practice must maintain a strong tether to the academy. Eight members of the practice maintain regular part-time teaching engagements with the University of Nebraska-Lincoln College of Architecture and College of Engineering, Iowa State College of Design, Kansas State University, and the University of Kansas. These collaborations have been cited nationally for excellence by Fast Company, the New York Times, Architect, and Architectural Record. The practice's support of academic institutions is generous and significant and includes studio service on the advisory boards of regional schools. Most recently in 2018 they established a tradition of supporting the United States Pavilion at the Venice Architecture Biennale under the direction of studio leadership and in partnership with national academic institutions.

Professional and community engagement is central to the practice with numerous members of the firm serving in various capacities for both the AIA Nebraska chapter and the Omaha section. They have maintained strong leadership and support of the Architecture Foundation of Nebraska and were fundamental in establishing noted community organizations like the Kaneko Architecture Camp and daOMA (design alliance OMAha, Inc.). The goal of these efforts is to promote public education and the appreciation of architecture and the design arts.

HDR's Great Plains Studio(s) are a talented and committed partnership of design professionals whose practice has represented our state and our chapter exceptionally well in local, national, and international contexts. I hope you will join me in support of this nomination for the AIA Nebraska firm of the year. I believe HDR's Great Plains Studio(s) have earned this distinction through hard work and an openness to collaboration.

Respectfully,

Jeffrey L. Day, FAIA
Principal – Actual Architecture
Professor of Architecture, University of Nebraska-Lincoln



GREAT PLAINS STUDIO(S)

HDR's portfolio and list of accomplishments attests that they continually bring to their profession more than they take away. Innovative thinking and accountability characterize the firm culture, and these values extend from their designers to their projects and the communities they impact. Located in Omaha and Lincoln, the Great Plains Studio(s) are a multi-disciplinary group of designers, engineers, and architects.

These studios have earned national distinction from the Institute for Interior Architecture and Regional & Urban Design. They have garnered three National AIA/AAH awards, fifteen AIA Central States Region design awards, and over forty AIA Nebraska design awards with over half of those selections receiving the distinction of honor. Their individual achievements are significant as well, with two AIA National Young Architect Award recipients, two members of the practice elevated to the AIA College of Fellows, and one receiving our state's highest honor: the Harry Cunningham Gold Medal.

Their activist spirit has led to their support in the founding of daOMA (design alliance OMAha, Inc.) a non-profit dedicated to the promotion of the architecture and design arts in Nebraska and western Iowa. Principals have served in both a board and committee capacity for AIA Nebraska, and have helped establish the summer architecture camps for primary school students at KANEKO.

Studio Leadership



Bruce D. Carpenter, AIA, LEED AP BD+C
Principal | Architecture

With over 30 years of architectural experience, Bruce's career is distinguished by contributions to Omaha's built environment through performing arts centers, museums, parks, entertainment venues, community centers, hospitals, and other public spaces that enrich a thriving community. A senior vice president at HDR, Bruce has also served as the president of AIA Omaha and The Architectural Foundation of Nebraska. In 2013, he was awarded The Harry F. Cunningham Gold Medal—AIA Nebraska's highest award for individual achievement in architecture.



Matthew J. DeBoer, AIA, NCARB
Principal | Architecture

Matthew is a 2018 AIA Young Architects Award recipient and has served as the managing principal for HDR's Great Plains Studio(s), where his responsibilities range from business development to ensuring client satisfaction and the practice's financial success. Matthew's early career was focused on design and he has several award-winning buildings in his portfolio. He is also an avid photographer and amateur water colorist.



William J. DeRoin, AIA, AICAE
Principal | Design

At an early stage in his career, William's design work has been recognized by his peers with multiple AIA awards, as well as features in publications such as Interior Design Magazine, Architect Magazine, and the Almanac of Architecture and Design. William supports the local community through leadership involvements and design education, and as an enrolled member of the Iowa Tribe of Kansas and Nebraska, he is a current member of the American Indian Council of Architects and Engineers.



John P. Dineen Jr., AIA, LEED AP BD+C
Principal | Architecture

John is an experienced project principal who focuses on civic programs and development. In addition to possessing a thorough knowledge of what it takes to put a building together, John understands the importance of community engagement. In addition to his architectural talents, John is a volunteer fireman and has acted in performances at the Omaha Community Playhouse.



Michael P. Hamilton, AIA
Principal | Design

Mike is well-known for his attention to the comprehensive integration of a project's guiding principles from concept to detail, as well as for his commitment to design excellence. An award winning designer, Mike has a special interest in materials, tectonics, and landscape. He is an avid modern furniture collector who turned his basement into a fabrication shop where he experiments with wood, steel, and repurposed fragments for furniture and art.



David F. Lempke, AIA, LEED AP BD+C
Principal | Design

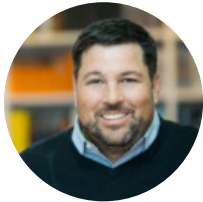
Having focused his entire career on the local community, David has led a diverse body of projects that encompass performing and visual arts, cultural facilities, civic institutions, and social services— many of which have received AIA design awards. He has been an adjunct instructor at the UNO Peter Kiewit Institute, has served as a visiting studio critic, and has participated as a panelist and presenter on forums for architecture. David believes architecture's role is "to serve, shape, and inspire humanity."

Studio Leadership



Michelle M. Penn, AIA
Principal | Healthcare

Michelle is a professional and community leader who currently serves as Chair for the Urban Design Committee for the City of Lincoln, Nebraska. Michelle has more than a decade of experience in healthcare design, including coordination with all disciplines and consultants on numerous projects. Michelle was principal and owner at her prior firm of 14 years, where she won an AIA award and five Best of Houzz awards for both design and service.



Thomas J. Trenolone, FAIA, IIDA, LEED AP, NCARB
Principal | Design

An architect and design advocate, Tom serves as Design Director for HDR's Great Plains Studio(s). He is the President and Founder of daOMA (design alliance OMAha), a non-profit focused on building greater design awareness through lectures and community engagement. Tom is a Lecturer at the UNL College of Architecture, a recipient of the 2011 National AIA Young Architects Award, has served on the National AIA Interior Design Committee, and is currently a member of the AIA Nebraska Committee on Design.



Douglas S. Wignall, FAIA, LEED AP
Principal | Architecture

Doug is the principal architect of the firm and currently serves as the President of HDR Architecture. He is responsible for guiding the firm's strategic growth. Doug serves on the AIA Large Firm Roundtable, is active with DesignIntelligence, and serves on the board of the National Building Museum in Washington DC. He was elevated to the American Institute of Architects College of Fellows in 2018.



Abby L. Scott, IIDA, AIA Allied Member, LEED AP
Principal | Interior Architecture

Abby is an award-winning interior designer and recipient of the National IIDA Member of the Year in 2020. She oversees the management of the design studio(s) where she cultivates a collaborative environment that fosters innovation while also working to establish balance between studio members' professional responsibilities and home life.



Matthew T. Whaley, AIA, NCARB
Principal | Architecture

Matthew is passionate about the integration of design and technology, and he is always looking for ways to bring innovation to our design process. For Matthew, there is nothing more rewarding than seeing our clients' goals and our expertise come together to form meaningful architecture. His past experience spans a large variety of project types and phases with an emphasis on business development and design.



Chandra Wondercheck, NCIDQ, IIDA, LEED AP
Principal | Interior Architecture

Chandra's design career has been founded on building strong relationships in a diverse portfolio of projects, including healthcare, workplace, and a variety of civic developments. Her strength is putting ideas into action and pushing to create a transformative experience for her clients. Chandra's favorite part of the design and construction process is the CA phase—walking the construction site and seeing the design become a reality.

Significant Awards, Honors, Recognition

National

- 2021 AIA Regional and Urban Planning Award, for Saving Main Street: Haxtun Hospital District
- 2020 AIA/AAH Healthcare Design Award (Built - less than \$25 million), for Shirley Ryan AbilityLab
- 2020 AIA/AAH Healthcare Design Award (Master Planning and Urban Design), for Saving Main Street: Haxtun Hospital District
- 2019 AIA Honor Award in Interior Architecture, for Shirley Ryan AbilityLab
- 2013 AIA/AAH Healthcare Design Award (Master Planning and Urban Design), for Focal Point Community Campus

Regional

- 2020 AIA Central States Region Excellence in Design, Merit Award in Unbuilt Design, for Dunham House Combat Wounded Care Residence
- 2020 AIA Central States Region Excellence in Design, Honor Award in Unbuilt Design, for Saving Main Street: Haxtun Hospital District
- 2020 AIA Central States Region Excellence in Design, Honor Award in Architecture, for Siena Francis House Emergency Shelter
- 2019 AIA Central States Region Excellence in Design, Distinguished Award in Interiors, for Bellevue University Science Labs
- 2018 AIA Central States Region Excellence in Design, Citation Award in Urban Design and Planning, for Alley (Re)Think
- 2018 AIA Central States Region Excellence in Design, Merit Award in Large Commercial, for Shirley Ryan AbilityLab
- 2018 AIA Central States Region Excellence in Design, Citation Award in Large Commercial, for New Parkland Hospital
- 2018 AIA Central States Region Excellence in Design, Merit Award in Adaptive Reuse, for Omaha Conservatory of Music
- 2017 AIA Central States Region Excellence in Design, Merit Award in Architecture, for Shirley Ryan AbilityLab

Regional (cont.)

- 2017 AIA Central States Region Excellence in Design, Emerging Architects Merit Award in Architectural Detail, for pal * ate
- 2017 AIA Central States Region Excellence in Design, Merit Award in Architecture, for Pacific Campus Parking Structure
- 2015 AIA Central States Region Excellence in Design, Merit Award in Architecture, for Marjorie K. Daugherty Conservatory
- 2013 AIA Central States Region Excellence in Design, Honor Award in Architecture, for Fire | Beach House
- 2013 AIA Central States Region Excellence in Design, Merit Award in Interiors, for Ovations Lounge
- 2012 AIA Central States Region Excellence in Design, Emerging Professional Honor Award in Unbuilt Design, for Fire | Beach House
- 2010 AIA Central States Region Excellence in Design, Merit Award in Unbuilt Design, for I2 NL Braga Fellowship
- 2010 AIA Central States Region Excellence in Design, Merit Award in New Construction, for Unit Load Redux
- 2001 AIA Central States Region Excellence in Design, Honor Award in Architecture, for Southwest Iowa Arts Center

State

- 2020 AIA Nebraska Excellence in Design, Honor Award in Regional and Urban Design, for Saving Main Street: Haxtun Hospital District
- 2020 AIA Nebraska Excellence in Design, Merit Award in Architecture, for UNL Johnny Carson Center for Emerging Media Arts
- 2020 AIA Nebraska Excellence in Design, Don Littler Masonry Honor Award, for Siena Francis House Emergency Shelter
- 2019 AIA Nebraska Excellence in Design, Honor Award in Architecture, for Strauss Performing Arts
- 2019 AIA Nebraska Excellence in Design, Citation Award in Masonry, for Strauss Performing Arts

Significant Awards, Honors, Recognition

State (cont.)

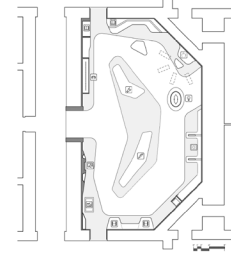
2019	AIA Nebraska Excellence in Design, People's Choice Award in Masonry, for Strauss Performing Arts	2015	AIA Nebraska Excellence in Design, Honor Award in Architecture Interiors, for Art Works at Joslyn Art Museum
2019	AIA Nebraska Excellence in Design, Merit Award in Architectural Detail, for The Jewell	2015	AIA Nebraska Excellence in Design, Honor Award in Architecture, for Marjorie K. Daugherty Conservatory
2019	AIA Nebraska Excellence in Design, Citation Award in Unbuilt Design, for Alley (Re)Think	2015	AIA Nebraska Excellence in Design, People's Choice in Unbuilt Design, for Niobrara Valley Preserve Learning Center
2018	AIA Nebraska Excellence in Design, Merit Award in Interior Architecture, for Bellevue University Science Labs	2013	AIA Nebraska Art x Architects, Honorable Mention, for Coffee Table
2017	AIA Nebraska Excellence in Design, Merit Award in Architecture, for Shirley Ryan AbilityLab	2013	AIA Nebraska Excellence in Design, Honor Award in Architecture, for Fire Beach House (Galveston Fire Station #4)
2017	AIA Nebraska Excellence in Design, Merit Award in Architecture, for Kaneko Entrance Addition	2013	AIA Nebraska Excellence in Design, Honor Award in Interior, for Ovations Lounge
2017	AIA Nebraska Excellence in Design, Merit Award in Unbuilt Design, for River's Edge	2012	AIA Nebraska Excellence in Design, Honor Award in Unbuilt Design, for St. Anthony Hospital
2017	AIA Nebraska Excellence in Design, Merit Award in Interior Architecture, for Omaha Conservatory of Music	2012	AIA Nebraska Excellence in Design, Honor Award in Architecture, for The Salvation Army Ray and Joan Kroc Community Center
2017	AIA Nebraska Excellence in Design, Merit Award in Architecture, for Shirley Ryan AbilityLab	2011	AIA Nebraska Excellence in Design, Citation Award in Architecture, for Centennial Research Facility
2016	AIA Nebraska Excellence in Design, Honor Award in Architecture, for THINK Whole-Person Healthcare	2010	AIA Nebraska Excellence in Design, Merit Award in New Construction, for Bellevue Medical Center
2016	AIA Nebraska Excellence in Design, Honor Award in Interior Architecture, for Firm Offices (Office Beta)	2010	AIA Nebraska Excellence in Design, Honor Award in Unbuilt Design, for St. James Hospital
2016	AIA Nebraska Excellence in Design, Merit Award in Architecture, for Baxter Arena	2009	AIA Nebraska Excellence in Design, Honor Award in New Construction, for Unit Load Redux
2016	AIA Nebraska Excellence in Design, Merit Award in Architecture, for Do Space	2008	AIA Nebraska Excellence in Design, Merit Award in Unbuilt Design, for Bellevue Medical Center
2016	AIA Nebraska Excellence in Design, Merit Award in Interior Architecture, for UNL School of Biological Sciences	2006	AIA Nebraska Excellence in Design, Citation Award in Unbuilt Design, for The Salvation Army Ray and Joan Kroc Community Center
2016	AIA Nebraska Excellence in Design, Emerging Architects People's Choice Award in Architectural Detail, for pal • ate	2006	AIA Nebraska Excellence in Design, Citation Award in New Construction, for Holland Center for Performing Arts
2016	AIA Nebraska Excellence in Design, Emerging Architects Merit Award in Architectural Detail, for pal • ate	2004	AIA Nebraska Excellence in Design, Citation Award in Extended Use, for Orpheum Theater
2015	AIA Nebraska Excellence in Design, Merit Award in Architecture, for New Parkland Hospital	2002	AIA Nebraska Excellence in Design, Honor Award in Architecture, for Southwest Iowa Arts Center



Fire | Beach House

Galveston, Texas
2013

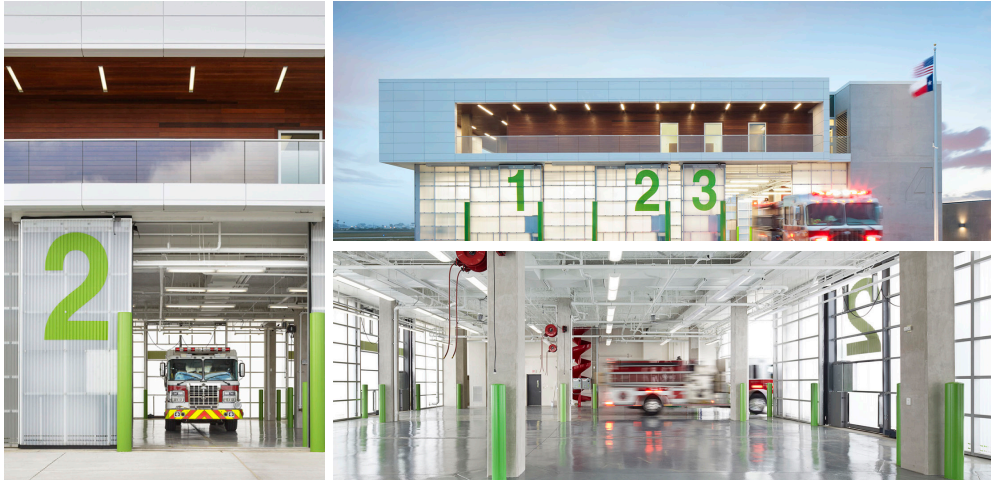
Awards ● ●



Art Works at Joslyn Art Museum

Omaha, Nebraska
2015

Awards ●



Fire | Beach House (Galveston Fire Station #4) is located on Galveston Island and serves as the primary fire and rescue support for island residences, the nearby international airport, and Galveston Beach. The building is designed to withstand hurricanes and other extreme weather conditions and is protected by cast-in-place concrete, acrylic panels on extruded aluminum framing, metal panel enclosure, and ipe decking. Equipped with its own generator and communication system, the Fire | Beach House is conceived as a self-contained unit capable of maintaining critical services in the face of disaster.

"Fighting Fire With Style: Galveston Fire Station #4," by Laura Mirviss, Architectural Record, March 2015

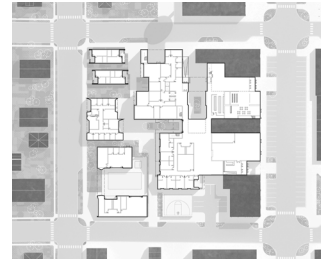


Art Works is a revitalized space within the iconic 1930s-era Joslyn Art Museum, designed to inspire imagination and creativity. Once a dark and unused library archive area on the lower level, the new creativity center now welcomes children of all ages into a bright world of discovery. A relatively small space, its curved, fluid design invites big ideas in a limitless world of imagination at nine different creative activity stations. A variety of digital art installations offer budding artists the opportunity to paint with touch screens and write and illustrate individualized stories that incorporate existing works of art.



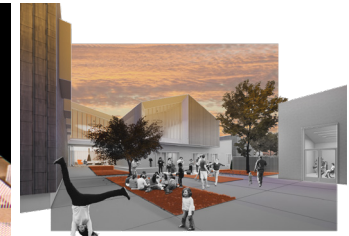
New Parkland Hospital
in association with Corgan
 Dallas, Texas
 2015

Awards ● ●



Saving Main Street
 Haxtun, Colorado
 2020 *Unbuilt*

Awards ● ● ●

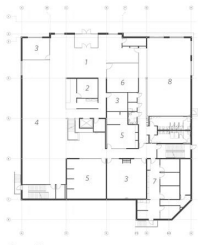


The New Parkland Hospital is a \$1.27 billion healthcare facility replacing the existing Parkland Memorial Hospital built in 1954. From its inception, the design for the project has been distinctly about the medical center's relevance in connecting to the city's urban fabric and importance as a civic anchor. In a joint effort with Corgan, we led the design for a master plan of a new 64-acre healthcare campus, as well as for the 862-bed full-service acute care replacement hospital. The Parkland campus serves as a teaching hospital for the University of Texas Southwestern (UTSW) School of Medicine.

- "Colossus of Care: New Parkland Hospital,"* by Jennifer Kovacs Silvis, Healthcare Design, July 21, 2015
- "Raising the Bar: New Parkland Hospital,"* by Suzanne Stephens, Architectural Record, June 2015
- "As a Hospital Rises, So Do Hopes for a Neighborhood,"* by Maxine Levy, The New York Times, April 8, 2014

Saving Main Street investigates the issues of health, wellness, economics, and design to create an environment that offers a unique community identity while improving the quality of life in rural towns throughout the country. A mixed-use destination with health and wellness as the foundation will serve to generate the population density needed to create an enlivened town center. This town center, in turn, is the key to fostering economic and social well-being. We envision reusing and repurposing existing main street structures and adding new spaces within the footprint to further activate the space and attract residents and visitors.

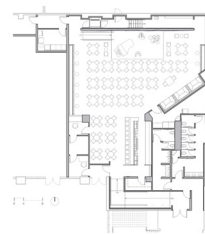
"World Changing Idea Awards," Fast Company, May 2020



Do Space

Omaha, Nebraska
2016

Awards



The Jewell

Omaha, Nebraska
2019

Awards



Located at the busiest intersection in the city of Omaha, Do Space serves as a point of convergence: uniting east and west, north and south. The project rethinks the evolution of the modern library by creating digitally-driven educational opportunities for people from all walks of life and at every level of experience, empowering the local community with innovative tools, guidance, and access to technology. Formerly an out-of-business big box bookstore, the building includes all new interiors, upgrades to all building systems, a dedicated data center, and exterior modifications.

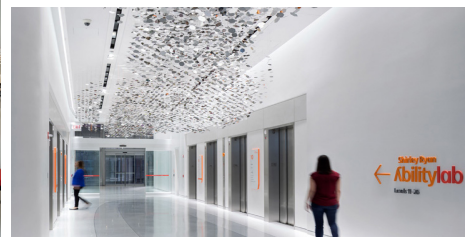
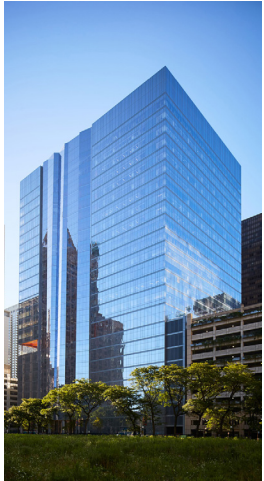
Located in The Capitol District in downtown Omaha, The Jewell is a music venue, cocktail lounge, and fine dining establishment offering an experience unlike anything else in Omaha. Offering full bar service and New Orleans inspired cuisine, the 150-seat venue will host both nationally recognized and emerging jazz artists on a stage large enough to accommodate a 5-piece band. Paying homage to Omaha's rich jazz history and its namesake—local music impresario Jimmy Jewell—the venue seamlessly blends the traditional with sleek modern design.



Shirley Ryan AbilityLab

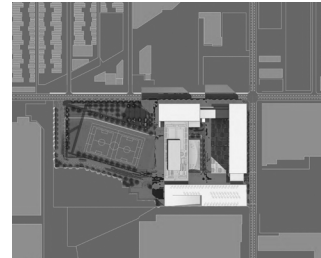
in association with Gensler,
Clive Wilkinson Architects, and EGG Office
Chicago, Illinois
2017

Awards ● ● ●



The Shirley Ryan AbilityLab is the top rehabilitation destination for adults and children with the most severe, complex conditions— from traumatic brain and spinal cord injury to stroke, amputation, and cancer. The project is the first-ever “translational” research hospital in which clinicians, scientists, innovators, and technologists work together in the same space— surrounding patients, discovering new approaches and applying research in real time.

“Honor Award Interior Architecture - Shirley Ryan AbilityLab,” by Ian Volner, Chicago Architect, December 2017
“Healthcare Environment Awards - Shirley Ryan AbilityLab” by Edward Keegan, Contract, November 2017
“All For One,” by Edie Cohen, Interior Design Magazine, July 2017



Focal Point Community Campus

Chicago, Illinois
Unbuilt

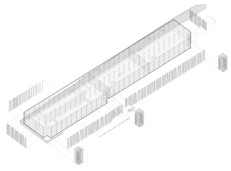
Awards ●



Located in one of the most vibrant yet blighted neighborhoods in Southwest Chicago, the Focal Point Community Campus envisions a public healthcare setting that embraces its local community. In addition to a new hospital for the community, the campus will bring thousands of jobs and a range of retail, wellness, education, arts, and recreation elements to enrich the lives of the more than 400,000 residents in the North and South Lawndale, Little Village, Pilsen, Back of the Yards, Bridgeport and Austin neighborhoods.

“On Chicago’s South Side, A Bold Mixed-Use Healthcare Project Aims to Be a Community Anchor and Public Health Salve,” by Zach Mortice, Metropolis, May 22, 2019
“Community Minded,” by Jennifer Kovacs Silvis, Healthcare Design, May/June 2013
“Focal Point Community Campus Proposal / HDR Architecture,” by Alison Furuto, ArchDaily, February 27, 2013

Pacific Campus Parking Structure

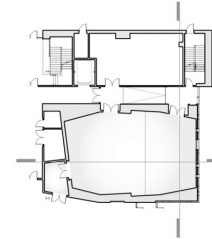


Omaha, Nebraska
2017

Awards



Strauss Performing Arts Center



Omaha, Nebraska
2019

Awards



As the University of Nebraska-Omaha continues to develop as a metropolitan university, this 1,400+ space parking structure provides a safe and functional facility that is easy to navigate and enhances the campus visually with a simple, bold expression. Serving both students in the adjacent residence halls and the campus itself, the parking structure uses a straight-forward design strategy for a utilitarian building type, achieving a fit as an integral component of the campus.

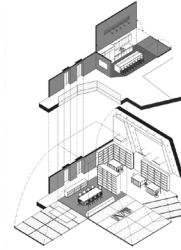
Originally completed in 1973, the Strauss Performing Arts Center was designed to house the University of Nebraska-Omaha School of Music. Recent growth in the music program and advances in technology established a need for UNO to construct buildings to accommodate additional space and facilities, including practice rooms, percussion and piano studios, a recording studio, and a recital hall. HDR designed the addition and renovation to the renowned School of Music, which included updating the acoustic and technological capabilities of the existing facilities.



Johnny Carson Center for Emerging Media Arts

Lincoln, Nebraska
2019

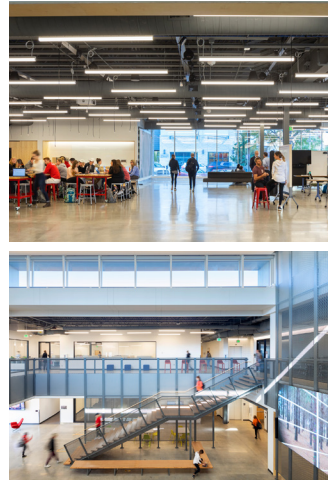
Awards ●



Firm Offices (Office Beta)

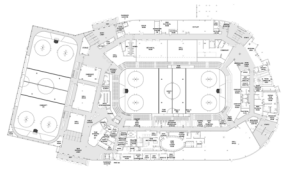
Omaha, Nebraska
2016

Awards ●



The Johnny Carson Center for Emerging Media Arts is an innovative new program at the Hixson-Lied College of Fine and Performing Arts at the University of Nebraska-Lincoln. Its vision is to become “the premier destination in the world for creative, young pioneers who use technology to innovate, to solve human-scale problems, to entertain audiences, and to tell breathtaking stories that stimulate, provoke and inspire.” As the curriculum design and building design were developed in tandem, we worked with the university to develop an integrated design solution that fosters collaboration and creative exploration, creating an energy that attracts the next leaders in emerging media arts.

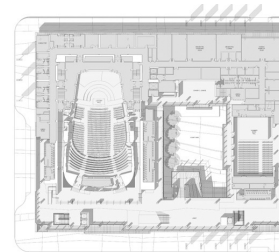
A large engineering company with a small architecture component wanted to rebrand/ redesign their office environment from the mundane land of tall cubicles and enclosed offices. The project was deployed in 4 distinct areas and conceptually branded as spaces for inspiration, stimulation, endurance, and confidence. Each space was conceptually designed as a ‘box to be unfolded’ in order to create a unique environment for each program. In each area the combination of personal bench workstations, mobile furniture, collaboration spaces, and custom millwork all within an open plan gave the employees the spaces desired for work and socialization.



Baxter Arena

Omaha, Nebraska
2016

Awards ●

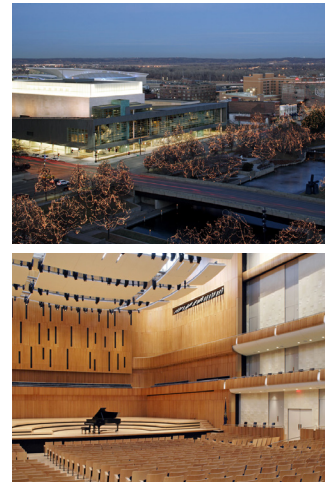
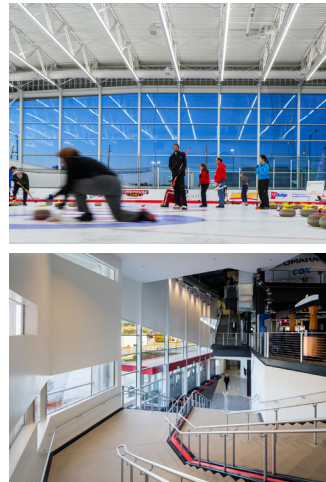


Holland Performing Arts Center

in association with Polshek Partnership

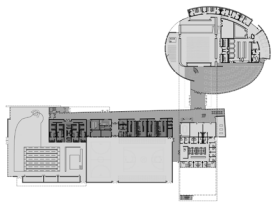
Omaha, Nebraska
2005

Awards ●



As the University of Nebraska-Omaha's main assembly building, the new Baxter Arena is a physical representation of UNO's athletic brand and anchors the southern extent of the campus. The facility is designed to serve multiple activities, weaving together function and aesthetics. The arena offers a full-spectrum student life experience, reinforces UNO Athletics, and engages Omaha's vibrant Aksarben Village culture.

The Holland Performing Arts Center is a commanding symbol of Omaha's commitment to the performing arts and its ongoing cultural renaissance. The building is clad in zinc, copper, and glass and is elevated above the ground plane. A glass clerestory fills the concert hall with natural light during the day and glows like an inviting beacon at night. The main concert hall is a contemporary interpretation of a shoebox hall: the narrow shape provides clarity and intimacy to the sound which allows for full, rich reverberation.



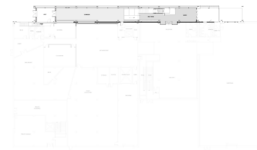
The Salvation Army Ray & Joan Kroc Community Center

Omaha, Nebraska
2012

Awards ●



The Salvation Army Kroc Center is the largest community center of its kind in Omaha, Nebraska. Surrounded by residential areas and serving as a neighborhood anchor, the Kroc Center offers arts, education, and recreation programs supported by an aquatics complex, a gymnasium, classrooms designed for conventional learning, an assembly complex, and administrative offices. The facility is nestled on a 16-acre site in a valley near major roadways and public parks. Designed as a destination where everyone of all ages, interests, and abilities feels welcomed and supported— no matter their physical, educational, and social goals— the Kroc Center benefits individuals, seniors, and families in a myriad of ways.



KANEKO Entrance Addition

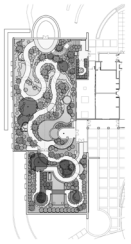
in association with Mark Mack Architects

Omaha, Nebraska
2017

Awards ●



With its distinctive artistic expression, the addition was “born” by juxtaposing a three-degree site slope against a three-degree column/beam slope, for a total effect of six degrees of variance. The entry area negotiates between the various levels of the different existing structures, ramps, stairs, and platforms to bridge the street level and interior levels. The three degrees of structural slope defines the building form and influences the glass and foundation walls. Light, transparent glass, and the panelite enclosure create a varied field of visual experiences as one climbs the stairs or works in the offices.



**Lauritzen Gardens
Marjorie K. Daugherty Conservatory**

Omaha, Nebraska
2015

Awards ● ●



The Lauritzen Gardens Conservatory creates a memorable visitor experience to encourage visits throughout the seasons. The conservatory consists of 10,000-square-foot for tropical plants and 5,000-square-foot for temperate plants, housed in two uniquely different display gardens. Both displays include garden elements indicative of regions in the southeast United States, allowing visitors to learn about and experience tropical environments otherwise difficult to find without traveling a great distance. Above all, the conservatory functions as an optimum plant growing environment.



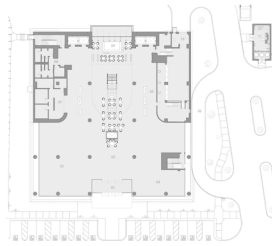
**Siena Francis House
Emergency Shelter**

Omaha, Nebraska
2020

Awards ● ●



The redevelopment and expansion plan for the Siena Francis House includes demolition of the current day shelter, environmental remediation, site preparation, and landscaping. The first stage of the project includes a new low barrier emergency shelter, which will provide each guest with access to a dedicated bed, increased access to bathing facilities, and is designed to appropriately accommodate the population with dignity in a durable and safe space. Designed as a welcoming and restorative environment, the new facility supports the foundational pillar of the Siena Francis House — to provide help to those who need it with dignity and respect.



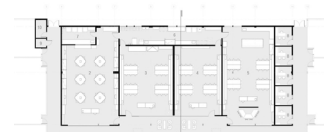
THINK Whole-Person Healthcare

Omaha, Nebraska
2016

Awards ●



Primary care's transition to purely patient-centered has taken a new form with this medical home focused on educating, monitoring, and treating patients with the goal of long-lasting relationships between patients and physicians. The facility houses 24 primary care physicians and more than 500 other healthcare professionals. As a prototype design that will be adapted to communities beyond the original facility, the simple cube form reflects this adaptability to relate to different sites and contexts, while the complex and intricate detail design promises a unique experience of the overall space.



Bellevue University Science Labs

Omaha, Nebraska
2018

Awards ● ●



Among the highest priorities for the Bellevue University Science Labs were accommodation for new equipment and technologies; opportunities to integrate research, teaching, and extra-curricular activities more seamlessly; and a design that puts "science on display" by making science and research more engaging, accessible, and fun for students across campus. Together, the integrated HDR team created a contemporary, active-learning, collaborative environment that can be easily reconfigured as STEM teaching methodologies continue to evolve.

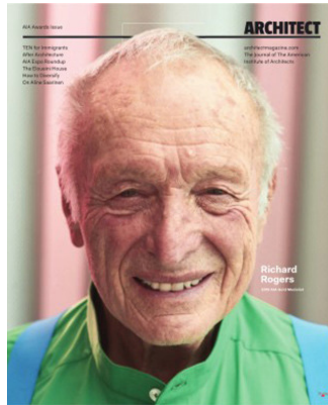
Selected Publications and Involvement



01



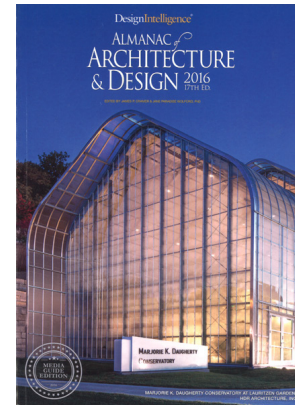
02



03



04



05



06

"Fighting Fire With Style: Galveston Fire Station #4," cover story by Laura Mirviss, Architectural Record, March 2015 ⁰¹

"The 2019 AIA Institute Honor Awards Interior Architecture - Shirley Ryan AbilityLab," by Katie Gerfen, Architect Magazine May 2019 ⁰³

"Marjorie K. Daugherty Conservatory at Lauritzen Gardens," Almanac of Architecture and Design, James P. Cramer, 2016 ⁰⁵

"daOMA sweet daOMA." YAF Connection, Vol. 6, December 2011

"AIA Institute Honors for Young Architects," by Mimi Zeiger, Architect Magazine, July 2011 ⁰²

"A Machine for Healing," by Ron Stelmarski, Texas Architect, January/February 2016 ⁰⁴

"Can-Do Spirit," by Jennifer Kovacs Silvis, Healthcare Design, August 2018 ⁰⁶

"Design for the Future (daOMA)," by Dave Link, METRO Magazine, February, 2009

KANEKO Architecture Camps



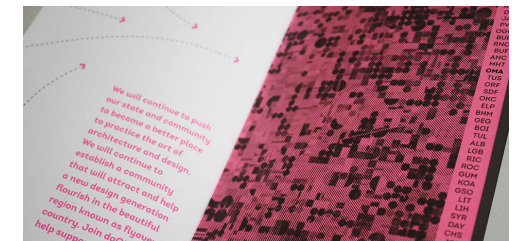
Venice Biennale US Pavilion



Habitat For Humanity



daOMA





Sara McClure

Sara has served as the Director of Development for The Nature Conservancy in Nebraska for over 10 years. Her skills include translating complex scientific and policy information to potential partners and donors. Sara oversees the fundraising team which raises major gifts for Nebraska conservation priorities. She works closely with scientists, ecologists, policy makers, land stewards, as well as donors and business leaders toward the organization's mission of "conserving the lands and waters on which all life depends."



June 17, 2021

Sara Kay, Hon. AIA
Executive Director | Chairperson AIA Nebraska Honors
AIA Nebraska
335 North 8th Street, Suite A
Lincoln, NE 68508

RE: HDR Great Plains Studio

Ms. Sara Kay and jury members:

It is my pleasure to write this letter in support of HDR's Great Plains Studio for the AIA Nebraska Firm Award.

In my current role as Director of Development at The Nature Conservancy Nebraska, I have worked and collaborated with the architects, engineers, and designers from HDR over the past 8 years on a variety of projects. At The Nature Conservancy, it is vital that all of our professional partners hold our same commitment and value towards the conservation and preservation of our diverse ecosystems, and I am happy to affirm that HDR meets this criteria.

Our first time collaborating was after a catastrophic wildfire that occurred on our Niobrara Valley Preserve in 2012. This 58,000-acre sandhills ranch lies along 26 miles of the Niobrara River and is one of the crown jewels of The Nature Conservancy (the world's largest conservation organization). We are in the land and conservation business, not the building business, and we literally had no one on staff or any idea how to even start the process of evaluating what we needed as far as facilities were concerned. On the advice of several different organizations we hired HDR. They literally sent a large team up for the first visit (5 hour drive from Omaha), and their commitment to the process over the next 6-9 months was evident. Their sensitivity to our needs and thoughts about how to be sustainable were important aspects of the design process. For instance, with an abundance of free-flowing water exiting the Ogallala aquifer (upon which the Preserve sits), they recommended an open loop heat pumping system for our heating and cooling. Using this available source for our heating and cooling we are able to make sure our facilities are as minimally taxing on the environment as possible. We certainly hadn't put much thought into our climate control system; we're glad HDR did. With HDR's drawings and information in hand, we were able to start raising funds, and four years after that, we now have a beautiful campus.



Nebraska Field Office
1007 Leavenworth Street
Omaha, NE 68102

Tel: (402) 342-0282
Tel: (402) 342-0474
nature.org/nebraska

More recently, during the height of COVID, we once again engaged HDR to do another facilities study, this time at our Platte River Preserves along the Platte River in Central Nebraska. While we missed the ability to talk through projects in person, their incredible patience and diligence on the many zoom calls we did this year was gratifying. Wrangling 6 land managers as they all give their opinions is no easy task. HDR got us to a place where we are all happy with the plans and are excited to start raising money and get the campus built. We are especially pleased with the "signature" conference center building they designed that literally reuses a 60's ranch house as its footprint. Being able to talk the talk and walk the walk by using sustainable and reusable materials is important to us. They know that and they delivered, even though we were sure that building would have to come down in order to get the conference center we wanted.

While the project-specific work we have partnered with HDR on is critical to our mission, I would also like to highlight the many ways HDR has supported our organization and greater community of conservation. The HDR Foundation recently made a grant to The Nature Conservancy to help us with accessibility for our world-renowned sandhill crane migration tours that we conduct every spring. It's a wonderful spectacle, but out of reach for many with mobility issues. The grant allowed us to purchase an electric (i.e. very quiet) transportation vehicle to take people the quarter mile to the blinds from the parking spot, and an all-terrain wheelchair for those wanting to make the trek independently. As well, Bruce Carpenter, a long-time member of The Nature Conservancy, joined our board 4 years ago and brings his depth of knowledge about the sandhills culture, from which he hails, and the Omaha philanthropic community, with whom he interacts. We appreciate HDR "loaning" him to us for unpaid board service as The Nature Conservancy works to conserve the lands and waters upon which all life depends.

Without reservation I recommended that HDR be awarded the AIA Nebraska Firm Award recipient.

Please do not hesitate to call or contact me if there are questions.

Best regards,

Sara McClure
Director of Development | The Nature Conservancy Nebraska



Clarence E. Waters, Ph.D., PE, F.AEI

Dr. Waters is the Aaron Douglas Professor of Architectural Engineering at the University of Nebraska's Durham School, where his scholarly interests are in lighting and power distribution systems for buildings. Previously, he has taught at Kansas State University and practiced professionally as an electrical project engineer. He is currently or has been licensed in 21 states and received two International Lighting Design Awards of Merit. Dr. Waters is involved with the Architectural Engineering Institute (AEI) where he served on the Board of Governors and the Illuminating Engineering Society of North America (IESNA) where he has chaired and serves on many technical committees.



Offering Programs in Omaha and Lincoln
COLLEGE OF ENGINEERING

Charles W. Durham School of Architectural Engineering and Construction
Clarence E. Waters, PhD, PE, FAEI
Aaron Douglas Professor of Architectural Engineering

16 June 2021

Sara Kay, Hon. AIA
Executive Director | Chairperson AIA Nebraska Honors
AIA Nebraska
335 North 8th Street, Suite A
Lincoln, NE 68508

RE: HDR Great Plains Studio(s) AIA NE Firm of the Year

Dear Ms. Sara Kay and members of the jury:

I am honored to write this letter in support of HDR for the "Firm of the Year" award from the American Institute of Architects Nebraska.

I came to the University of Nebraska-Lincoln Architectural Engineering (AE) program in 2000 to be part of starting a new program located in the design-rich community of Omaha. I saw the immense opportunity for outstanding mutually beneficial relationships. I have not been disappointed! I often say that there is not a better place in the world for a program like AE than Omaha. Without question, HDR is a major player in this interaction. Here are some examples of their involvement and leadership with the AE program and its students.

HDR is always well represented on the AE Industry Advisory Committee (AEIAC). AEIAC is a group of 14 industry leaders from across the country that meet twice each year for full-day meetings to keep Nebraska AE leading our industry.

HDR is very involved with the Freshman mentoring program. In this program, Freshmen are given upper-level students and industry professionals as mentors in the first weeks of their first semester. The students interview these mentors and visit their offices.

The HDR structural studio lead, James Wingert, is the industry advisor for the AE Student Leadership and Advisory Committee (AESLAC).

HDR came to our rescue when one of our faculty members had a heart attack while visiting his daughter in the DC area during spring break. He taught our Professional Practice course. A short phone call resulted in HDR's training staff taking over the course for the remainder of the semester. The students' ratings of the course were outstanding.

HDR always serves as mentors and evaluators for Team Design. Team Design is an award-winning two-semester capstone course for the AE program. Students are placed on teams of 8-10 students and given professional structural, mechanical, electrical, and specialty mentors in accordance with the project. In addition, another set of professionals evaluates the student's documents and presentations. This course has won the National Council of Examiners for Engineering and Surveying (NCEES) Grand Prize twice for connecting professionals with students. Nebraska AE is the only program in the country to have been given the award more than once.

Todd Feldman is an HDR Industry Fellow who regularly helps with Team Design and our Steel course. The Nebraska AE industry fellow program brings industry professionals to our faculty and classrooms. Industry fellows are partially paid and partially donated by their firms. They become part of the AE faculty, participating in all faculty activities. Todd received the 2019 Outstanding Faculty Award from the students.

HDR and Nebraska AE are truly connected in a mutually beneficial relationship. We depend upon their involvement with our program as mentors, evaluators, advisors, faculty, and emergency helpers. The

The Charles W. Durham School of Architectural Engineering and Construction
Scott Campus: 101E The Peter Kiewit Institute / 1110 South 67th Street / Omaha, NE 68182-0816 / 402-554-4958
cwaters2@unl.edu, www.durhamschool.unl.edu

quality of their professional work is outstanding and benefits us and the students greatly. You can see why I say that there is not a better place in the world for an AE program.

As practicing professionals, the Architects and Engineers from HDR bring invaluable professional experience into the classroom, giving their time, talent, and expertise to our students, enriching our students educational experience, and setting an example of "paying it forward," a gesture that benefits our entire community.

While HDR is a global practice, the Omaha and Lincoln studios act locally, delivering what has become a legacy of excellent design as illustrated by the numerous awards bestowed on the firm by the AIA.

As HDR's involvement in Nebraska AE attests, their firm is set apart by their generosity of giving back. I strongly recommended HDR to you as a well-deserving candidate for the award of "Firm of the Year." Please do not hesitate to call or contact me if there are questions.

Best regards,

Clarence E. Waters



Stephan Grot

Stephan is currently the Executive Director of KANEKO, a position he has held since 2019. With a background in fine art, graphic design, and technology development, Stephan has worked closely with the Kaneko family for most of his career to organize, manage, and promote Jun's body of work. He has also been an adjunct professor at UNO, managed his own graphic design and marketing business called Maker, and been involved with digital software at Client Resources Inc. and From Now On, a start-up which he co-founded.



1111 Jones Street
Omaha, NE 68102

☎ 402-341-3800
🌐 thekaneko.org
✉ info@thekaneke.org

16 June 2021

Sara Kay, Hon. AIA
Executive Director | Chairperson AIA Nebraska Honors
AIA Nebraska
335 North 8th Street, Suite A
Lincoln, NE 68508

RE: HDR Great Plains Studio(s) AIA NE Firm of the Year

Ms. Sara Kay and members of the jury:

It is with great pleasure that I write this letter in support of HDR for the Firm of the Year Award from the American Institute of Architects Nebraska.

Months ago, I was given the gift of an HDR publication called "33.3 This Point in Time," which chronicles many projects with observations by independent critics. I am very familiar with HDR's talents (I am currently working inside one of their building projects), but I was struck by the sheer breadth of the work exhibited in the book, and most importantly I was amazed at HDR's thoughtfulness for the landscape, environment, and community in which their projects are being considered. For these accomplishments alone, they deserve high praise.

HDR's excellence extends far beyond their masterful architectural and engineering projects. As the Executive Director of an arts and culture nonprofit, I have witnessed first hand HDR's dedication to impactful community relationships. They were a large part of our curated space during an architectural exhibit of studio work in 2013, and many times since then they have exhibited works by both the company and talented individuals on their staff. Their staff have been faithful participants, facilitators and generous sponsors in many of our public programming initiatives. Senior representatives have been instructors in our STEM based Architectural summer camps on a yearly basis since 2015 and will instruct two more sessions yet this summer. Also, Bruce Carpenter, their senior vice president, serves as the Chairman of the Board for KANEKO and is a loyal steward of many other treasured legacies of Nebraska.

KANEKO has benefitted greatly from the talent and unsolicited generosity of HDR's staff. We are only one organization, but I am certain that there are hundreds of other local groups that witness their dedication to building thoughtful environments and a strong community of people.

Thank you for your consideration and best regards,

Stephan Grot
Executive Director
KANEKO