

August 10, 2020

AIA Nebraska Jury
AIA Nebraska
335 N. 8th Street, Ste. A
Lincoln, NE 68588

Re: Nomination of Jeffrey Day, FAIA for AIA Nebraska Award for Architectural / Design Education

Dear AIA Nebraska Jury Members,

It is with great enthusiasm that I nominate Jeffrey L. Day, FAIA, UNL Professor of Architecture for the AIA Nebraska Award for Architectural / Design Education. In his 20 years at UNL, Jeff has exemplified a highly successful career that transcends the realms of academy and practice through each of the University missions – teaching, creative activity, and service and gained national and international prominence and distinction not only in his creative work, but in teaching as well.

Recognition of the quality of teaching and creative exploration, not only in the classroom, but beyond into a the realm of creative activity occurred for the 2000-01 Academic Year when Professor Day, who at the time was maintaining an award-winning and successful practice in Omaha and San Francisco was awarded the Hyde Chair of Excellence Visiting Professor position in our College – a highly competitive and prestigious position.

My nomination could focus on the remarkable attributes of any single area of Jeff's work including the outstanding force at the intersection of teaching | creative activity | service; but will capture the convergence of these areas and the significant and lasting impact on the profession as a result. The true attribute of influence is the impact on 20 years of students at multiple levels of their architectural education. Introducing design-build, not as an isolated project but rather as an integrated way to understand the implications of design as idea. He has served as faculty member, as program director, and in leadership positions in the program for curriculum development; served at the university on design committees, thus influencing the designed fabric of the university. In each, he has made significant contributions with lasting impact.

In the fields of architecture and design, excellence and prominence in one's work is recognized through design awards of excellence, through nominated and elected service at the highest levels of national organizations, through invited lectures and exhibits, through invitations to serve as a design critic at other prestigious universities, through competitive and invited panels and presentations, and through publication in highly influential journals and public press. Since 2001, when he joined our faculty as an assistant professor of architecture, the total of his record is astounding and unparalleled in academia in the architecture field, deserving of the recognition and award in itself. In particular, Jeff has a sensitivity to the plains, demonstrated through his work with the Art Farm in Marquette, working with communities across Nebraska who would conceivably never work with an architect to envision "what

could be”, and in conceptualizing new ways to reinforce the carefully woven connection of people to place and to each other.

Highlights of Professor Day’s exceptional record of distinguished activity include:

- National recognition by the profession signified by his elevation in the American Institute of Architects (AIA) to Fellow, a status awarded to only 3% of the membership.
- Recognition by the Academy as he was elected to a national position on the Board of Directors for the Association of Collegiate Schools of Architecture (ACSA)
- 42 invited lectures across the globe
- 47 panels and presentations (including invited and competitively awarded)
- 25 invited visiting critic positions (invitations recognize his excellence in creative work and teaching and a desire to bring that influence on students in their architecture programs)
- 6 practice awards (from both coasts of the U.S. and recognizing emerging and established talent and innovation)
- 25 national and international design awards (particularly significant here is the Citation Award from Progressive Architecture and resulting in his work featured on the cover of this prestigious periodical – the result of his work with students)
- 64 regional, state, and local design awards (highly significant given the caliber of design and professional firms in the State of Nebraska and the Central States region)
- 26 juried and curated exhibitions of his creative activity work
- 29 conference presentations
- 19 authored publications
- 73 features in design publications

Significantly, Day’s creative activity is recognized across professions and recognize Day’s excellence in creative activity across a wide variety of scales - from the intimate details of touch and furniture to large project conceptions affecting an entire community. The common factor is the innovative, courageous and comprehensive attitude of his work and this is what he imbues in students and emerging professionals. At every level, Professor Day’s work is considered exceptional and influential. His work challenges conventional approaches, explores new and creative manipulations of common materials, utilizing new technologies with traditional methods, in other words, it exemplifies innovation. He has a critical eye for excellence and provides inspiration and opportunity for others.

It is with utmost enthusiasm that I support Professor Jeff Day for the AIA Nebraska Award for Architectural / Design Education honor.

Sincerely,



Katherine S. Ankerson, AIA, FIDEC, FIIDA, NCARB
Dean, College of Architecture
University of Nebraska-Lincoln



Jeffrey L. Day began his teaching career at the University of Nebraska in 2000. After holding the prestigious Hyde Chair of Excellence visiting-professorship for a year, he began a tenure-track appointment and is now a Full Professor teaching Architecture, Landscape Architecture, and Interior Design students. Jeff has taught throughout the Architecture curriculum and from his early innovations in beginning design (featured in conferences and published in the Journal of Architectural Education) to design studios, lecture courses and seminars, and the celebrated FACT design-build program, he empowers

students to develop their own creative approaches to the thorniest architectural challenges of the day. As the ideal venue for this exploration, FACT engages students in four ways: 1. through a M. Arch Design Research Studio, FACTdrs; 2. through a repeatable elective course offering, ARCH 518; 3. through *ad hoc* independent study contracts for academic credit; and 4. through paid internships funded by grants and sponsored programs. In all situations, Jeff seeks **transferrable lessons** to disseminate widely, influencing the discipline well beyond the walls of the academy.

Teaching Appointments

University of Nebraska-Lincoln, Professor of Architecture & Landscape Architecture, 2001-present

- Killinger Professor 2020 - present
- Douglass Professor 2006-2008 & 2018-2020
- Faculty Development Leave, 2009 and 2017 (funded)
- Director of the Architecture Program, 2014-2017
- Interim Director of the Arch. Program, 2012-2014

- Joint appointment, Landscape Arch., 2008-present
- Founder of FACT, 2001

University of Nebraska-Lincoln, Hyde Chair of Excellence, honorary Visiting Professor 2000-2001
 University of Nebraska-Lincoln, Lecturer, Spring 2000
 University of California, Berkeley, GSI, 1993
 Harvard University, Cambridge, Course Assistant, 1985

Leadership

Jeff has been instrumental in developing pedagogy and curricula throughout his teaching career and continues to this day as an elected board member of ACSA and member of the ACSA Education Committee. As Director of the ARCH Program at UNL (2012-2017) Jeff increased enrollment by over 25%, started a new 3-year M. Arch track to introduce students from diverse educational backgrounds into the discipline, achieved a perfect NAAB re-accreditation (2015), nurtured junior faculty, and

helped to create a multi-disciplinary common first year program founded on human-centered design. Working with faculty, he restructured M. Arch-level studios into “design-research studios” in which faculty research, student design experimentation, and community service come together. Outside the academy, Jeff serves on the boards of several non-profits and community groups and helped to found Design Alliance Omaha, a non-profit advocating for the broad value of design.

Service to the AIA

AIA Nebraska Board of Directors, ex officio, 2012-2017

AIA Chicago 2015 Small Project Awards, juror, 2015

AIA Colorado North, Design Awards jury chair, 2013

AIA South Dakota, Design Awards jury chair, 2011

AIA Dallas, Unbuilt Design Awards jury chair, 2011

AIA Ohio, Design Awards, juror, 2011

Virginia Society of the AIA Design Awards, juror 2011

AIA Nebraska Awards Program Review Committee, 2011

AIA Wichita, 2008 Design Awards jury chair, 2008

AIA Omaha Urban Design Charrette, coordinator, 2003

AIA Nebraska Young Architects Award, juror, 2002

Design Alliance Omaha, board member, 2007-present

Jeffrey L. Day, FAIA inventively integrates teaching, practice, and design-research to develop young architects committed to design excellence and collaborative process. He enriches culture and strengthens community with rigorous investigations outside the recognized architectural centers.

TEACHING – PRACTICE



FACT at the Salina Art Center

Jeff served as Director of the Architecture Program at UNL from 2012-2017, and he continues to serve on many boards, juries, and panels.

“I could the work of FACT being very different in the next 10 years because we don’t have a stylistic agenda,’ says Day. ‘We’re all about improvising with the conditions at hand and creatively tackling any problems that arise.” Mae Ryan, Architectural Record

By engaging them in pro-bono, design-build projects, Jeff inspires his students to embrace circumstance and uncertainty as instigators of design innovation.

As Killinger Professor of Architecture and Landscape Architecture at the University of Nebraska, Jeff teaches design studios, seminars, and workshops exploring the intersection of design conceptualization and construction – the meeting place of theory and practice. Jeff runs the award-winning **Fabrication And Construction Team (FACT)** as a closely allied practice of his firm Actual Architecture Co. Recognized by the ACSA as an innovator in design-build education, Jeff engages design intensive projects and creative, non-profit clients in collaborations that span design and construction. Where academic design studios focus on ideation, conceptualization, and representation, **FACT focuses on the creative opportunities embedded in the physical realization of projects.** Building a reciprocal relationship between design and production, students become better architects by learning how designs are built through innovative team approaches, by deploying non-standard methods, engaging with a diverse range of fabricators, or by making project components themselves.

FACT won ACSA’s first national Design Build Award in 2013, the 2016 ACSA Collaborative Practice Award, a 2019 P/A Award, and in collaboration with Actual Architecture Co., earned several national and regional AIA awards. FACT has helped over 230 students enter the profession as skilled, collaborative designers who are now leaders of large and small practices. To date, at least one graduate has been honored with an AIA Young Architect’s Award. Beyond the students directly impacted, the widely published and awarded work Jeff has achieved with FACT influences the broader profession through **transferable lessons** about creative collaboration and alternative modes of practice.

In 2018, after 15 years practicing as a founding principal of the renowned office Min | Day (San Francisco & Omaha), Jeff reorganized the Omaha office as **Actual Architecture Company**, an internationally recognized firm based in Nebraska and operating around the world with expansive vision. Jeff draws on his background in art, landscape, and architecture to provide informed and highly considered design for a wide range of clients, sites, and projects – from individuals to art institutions, urban to rural settings, and furniture to buildings and master plans. By maximizing the potential of academic and professional practices, Jeff integrates design-research, speculative design, substantial *pro-bono* investments in the community, and a commitment to building highly refined yet flexible architecture with diverse clients.

Jeff’s projects exploit the interplay between actual and implied volumes and natural and applied color, shaping places that can be appreciated both for their architectural discipline and the sheer pleasure they afford. The work is rigorously detailed while eschewing strict formal order in favor of responsive, flexible spaces that remain open to the improvisations of everyday life. Design rigor, he believes, can — and should — enable playfulness as well as seriousness.

Jeff has garnered numerous awards including the prestigious Architectural League of New York’s 2016 Emerging Voices, Architectural Record’s 2009 Design Vanguard, the 2007 AIA California Council’s Emerging Talent award, AIA New Practices San Francisco 2009, Residential Architect’s 2010 Rising Star, Architectural Record’s 2003 archrecord2, 60 national, regional, and state AIA design awards, 9 ACSA design awards, and more. Jeff’s work is widely published and he lectures frequently around the county and internationally impacting professionals as well as students world-wide.



FACT collaborating with artist Theaster Gates at Carver Bank

Selected FACT Projects

At the core of FACT are projects engaging places of intersection between the production and consumption of culture – where creators and audiences meet.

- ACSA Design Build Award
- ACSA Collaborative Practice Award

Unique among academic design-build programs are the close ties between Actual Architecture Co. (ActualAC, formerly Min | Day) and FACT. Jeff and the ActualAC staff are involved at various stages of many projects to offer support and continuity for projects that span multiple semesters. Believing that the true mission of design-build pedagogy is to engage students with the creative opportunities in the development and realization of design ideas, Jeff and his client/partners often propose a conceptual design direction to students at the outset to immediately focus the studio on the team effort of design

development, fabrication, and construction. In the work of both FACT and ActualAC, unique partnerships and unconventional approaches are the norm.

All FACT client/partners are non-profit organizations or communities, and ActualAC's involvement is always *pro-bono*. ActualAC provides necessary back-office support and licensure for the student work, while FACT allows ActualAC to expand its impact on the non-profit world and to serve communities in need.



The Grocery, Sandhills Institute

Role: Project Director;
Project Architect

Rushville, Nebraska

Status: Construction Documents completed 2018, in progress

Student Role: ARCH 510-511 FACT Design-Research Studio

Remodel of 4,000 s.f. mid-century store for new rural art exhibition gallery and community center focusing on engagement between rural communities and visiting artists. Includes new tower structure for visiting artists residence.



Box House One

Role: Project Director

Lincoln, Nebraska

Status: Construction Documents completed 2016, on hold

Student Role: ARCH 510-511 FACT Design-Research Studio

Prototype affordable home for non-profit Neighborworks-Lincoln featuring efficient use of repurposed shipping containers, standard roof trusses, and off-site fabrication. 1,200 s.f. \$150,000



Carver Bank Outdoor Spaces

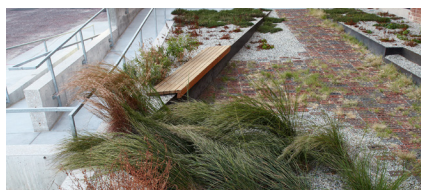
Role: Project Director

Omaha, Nebraska

Status: built 2013

Student Role: ARCH 518 FACT, 3 credit elective course

Benches, hardscape and, landscape designed and built for new cultural center and artists' workspace, gallery, and locally-owned sandwich shop developed by artist Theaster Gates for North Omaha.



Bemis Gardens

Role: Project Director

Bemis Center for Contemporary Arts, Omaha, Nebraska

Status: built 2008

Student Role: ARCH 518 FACT, 3 credit elective course

Public access green space designed through public process in the gallery. Built by students with local artists and craftspeople.

FACT Projects, continued

[a] “A comprehensive urban agriculture proposal that provides an alternative model for land use and architectural infrastructure. The scheme is commendable for being thoroughly researched and rigorously executed.” AIA Nebraska jury comment

- AIA NE Merit Award [a]
- AIA Central States Region (CSR) Honor Award
- AIA San Francisco Citation

- AIA S.F. Honor Award
- AIA National Small Project Honor Award
- ACSA Design Build Award
- AIA NE Merit Award [b]
- AIA CSR Honor Award

- AIA Nebraska Honor Award

[b] “In the profession of architecture, we don’t yet know the potential for algorithmic design strategies, but this social condenser and transition space presents a great opportunity for initial applications. The project’s craftsmanship foreshadows the artisanship found within the [art center’s] galleries.” AIA Nebraska jury comment

- AIA Nebraska Honor Award
- AIA CSR Citation Award



Salina Art Center

Salina, Kansas

Status: phase one, ARTery, built 2012

Student Role: ARCH 518 FACT, 3 credit elective course + paid interns

Master plan for 4 buildings with phase one, design & construction of education wing interior renovations including complex off-site fabricated built-in components. Fabrication done in collaboration with medium-security prison workforce development program.

Role: Project Director



Community CROPS Food Center

Lincoln, Nebraska

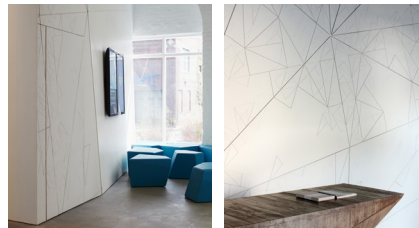
Status: schematic design completed 2008

Pro-bono commission for Min | Day

Student Role: paid FACT interns

Design & fundraising support for non-profit serving the immigrant community. Includes indoor farmers market, restaurant, offices, greenhouse, and education space. Garden is organized by an algorithm controlling available space.

Role: Design Principal



Bemis InfoShop

Bemis Center for Contemporary Arts, Omaha, NE

Status: built 2010

Student Role: ARCH 518 FACT, 3 credit elective course + paid interns

New lobby with new reception desk and algorithmically designed/digitally fabricated wall. Fabrication done with medium-security prison workforce development program. Pro-bono project partially funded by FACT grants.

Role: Project Director



Bemis Soft Cube

Bemis Center for Contemporary Arts, Omaha, Nebraska

Status: built 2008

Student Role: paid interns

Gallery modifications including digitally fabricated acoustic baffle/bench/light fixture. Designed & built in 6 weeks.

Role: Project Director



Art Farm @ Sheldon

Sheldon Museum of Art, Lincoln, Nebraska

Status built 2008, exhibition run January - April

Student Role: ARCH 518 FACT, 3 credit elective course + paid interns

Museum exhibiton co-curated by the candidate including FACT design work for Art Farm, work by Art Farm artists-in-residence, and a 100-year old farm shed repurposed by FACT as a video art gallery. 10,000 visitors over 4 months.

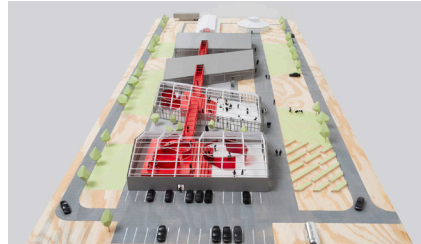
Role: Project Director

FACT Projects, continued

In addition to work depicted on these pages FACT has on-going projects with Bemis Center for Contemporary Arts, the Sandhills Institute, Art Chapel, and other creative non-profit organizations. In Fall 2020 FACT will begin an ambitious program to design affordable homes for 6 community development organizations. The work from Fall 2020 will be exhibited at History Nebraska along with other programs highlighting affordably housing and the eviction crisis in Nebraska and beyond.



Bemis LOW END Role: Project Director
 Omaha, Nebraska
 Status: Phase One completed 2020
 Student Role: ARCH 510 FACT Design-Research Studio + paid interns
 FACT students collaborated with prominent local musicians, artists, designers, tradespeople, and Bemis staff to design and build this unique performance venue and support facilities, including a recording studio, for a new Sound Art + Experimental Music residency program in a contemporary art center.



Sheridan County 4H Fairgrounds Role: Project Director;
 Project Architect
 Gordon, Nebraska
 Status: schematic design completed 2020
 Student Role: ARCH 410 Collaborate studio
 A master plan and several large buildings for a county fairgrounds in the Sandhills. This project reverses biases towards urban culture as global culture and the rural as a resource primed for extraction proposing instead a new cultural nexus of commoning for the rural.



Larsen Tractor Test & Power Museum Role: Project Director
 Lincoln, Nebraska
 Status: schematic design summer 2020, in fundraising
 Student Role: ARCH 411/597 FACT Design-Research Studio
 To celebrate the 100th anniversary of the Nebraska Tractor Law FACT explored design scenarios for the Larsen Museum expansion ranging from building renovation/addition to new construction.

Exhibitions of FACT and other educational work



[a] Bemis Gardens, FACT 2011

PROJECT 2018, (FACT's Sandhills Inst. Grocery and Jazz in June Kite Cloud), June 2018

the little gallery @ polecat hq, (solo exhibition "FLOCK") Omaha, NE, Oct.-Nov. 2016

Sheldon Statewide | Shape Up! Visualizing the Geometric World, (Pneumad & Soft Stones), Sheldon Museum of Art, Lincoln, NE May 20-July 31 2016

Bemis Gardens, co-curated by Jeff Day & Hesse McGraw, Bemis Center for Contemporary Arts, Omaha, NE, April 29-July 30, 2011 [a]

Vertical Gardens (CROPS Food Center), AIA San Francisco Gallery, February 25 – May 14, 2010

Art Farm @ Sheldon, curated by Jeffrey L. Day & Sharon Kennedy, Sheldon Museum of Art, Lincoln, NE, January 4-April 27 2008

Infrathin, (solo exhibition) Syracuse University, March 20-April 14, 2006; Roger Williams University, Nov. 2006; University of New Mexico, Jan. 2007; Univ. of Arkansas, Sept. 2007; Louisiana State Univ., Oct. 2007

Altered Practice, group show, AIA San Francisco, October 6-November 20, 2005

FACT1: Bemis = Art Landscape, The Bemis Center for Contemporary Arts, Omaha, Nebraska, July-November 2002 (re-installed at UNL CoA Gallery January 2003)

Major Lectures & Keynotes

In addition to the events listed here, Jeff participates frequently in panel discussions, makes conference presentations, and runs continuing education sessions: 88 since 2000

[a] “Emerging Voices spotlights individuals and firms based in the United States, Canada, or Mexico with distinct design voices and the potential to influence the disciplines of architecture, landscape architecture, and urbanism.”



[b] Digital fabrication research within FACT projects



[c] Urbanized Fabrics, Doha, Qatar, design-build workshop co-led by Jeff for VCUQatar

AIA Central States, keynote, September 2020

AIA Eastern Tennessee, keynote, September 2020

Univeristy of Tennessee, Whichcraft, September 2020

AIA Wisconsin, keynote, Whichcraft, April 2020

AIA Cincinnati VISION, Whichcraft, June 20, 2019

Kansas State Univ., Cowboys & Farmers, April 10, 2019

American University of Sharjah, UAE, March 2019

U.T. Austin, “Cowboys & Farmers”, March 21, 2018

Texas Tech El Paso, “Cowboys & Farmers”, Dec. 14, 2017

AIA Wstrn. NE Conf., “Cowboys & Farmers”, Ap. 21, 2017

U.T. Arlington, “Cowboys & Farmers”, Nov. 16, 2016

Mississippi State U., “Cowboys & Farmers”, Nov. 11, 2016

Emerging Voices, The Architectural League of New York, “Cowboys & Farmers”, New York, April 5, 2016 [a]

Univ. of Detroit Mercy, “Whichcraft”, Nov.13, 2014

AIA California Council, Now Next Future, “Whichcraft”, October 25, 2014 [b]

Broad Art Museum, East Lansing, MI, “Anything Goes”, July 10, 2014

Univ. of Illinois-Chicago, “Anything Goes”, April 1, 2013

Newcastle Univ., UK, “Recent Abductions”, May 2, 2012

Univ. of Cincinnati, “Recent Abductions”, Jan. 30, 2012

Univ. of Idaho, “Recent Abductions”, October 17 2011

AIA Omaha, “Recent Abductions”, May 19, 2011

University of Kansas, “Recent Abductions”, April 22, 2011

South Dakota State University Dept. of Architecture, keynote, “Recent Abductions”, March 26, 2011

ACADIA @ UNL, keynote, “Parametric Noopolitik”, Lincoln, NE March 12, 2011

Residential Architect Reinvention Symposium, 2010 Rising Star speaker, New Orleans, Dec. 7, 2010

Texas Tech University, “Infrathin”, March 25, 2010

AIA South Dakota, keynote, Questioning the House, October 15, 2009

Virginia Commonwealth University, Doha, Qatar, “Urbanized Fabrics”, lecture & workshop March 11, 2009 (c)

AIA Kansas, keynote, “Infrathin” Oct. 11, 2008

Drury University, “Infrathin” February 8, 2008

Sheldon Museum of Art, Lincoln, NE, “Art Farm @ Sheldon”, Jan. 22, 2008

Louisiana State University, The Washer Hill & Lipscomb Lecture, “Infrathin”, Oct. 24, 2007

Monterey Design Conference, Emerging Talent Lecture, October 20, 2007

University of Arkansas, “Infrathin”, September 24, 2007

University of New Mexico, “Infrathin”, January 29, 2007

Roger Williams University, “Infrathin”, November 1, 2006

University of Nebraska-Lincoln, Hyde Lecture, “Bemis = Art Landscape”, Jan. 30, 2003



[a] FACT working on Victoria House at Art Farm, Nebraska

Teaching Awards & Grants

By disseminating the work of both FACT other educational ventures via public lectures, exhibitions, design awards, and publications, Jeffrey L. Day, FAIA increases the impact of transferrable lessons, addressing a much broader audience than those immediately impacted by the projects themselves. Design awards build recognition for the work and directly benefit the students involved in award-winning FACT projects. Awards programs are often seen as internal to the discipline, but through the work of the Institute, these programs promote architecture and the value of design

Killinger Professorship, \$10,000, 2020-2022

Douglass Professorships, \$30,000, 2006-2008 & 2018-

UNL Parents Association, Certificate of Recognition for Contributions to Students, 2018

Faculty Development Leaves, funded s.2009, f.2017

College of Architecture Friends Association, Distinguished Faculty Award, 2014

Rural Futures Institute Competitive Grants Program, “Engaging Nebraska..”, \$82,812.05, 2012-2016

Hayes Kitty Development Fund, \$5,000 grant to support student design / research, 2010-2011

Arts & Humanities Enhancement Fund, \$10,000, “Art Farm: Making the Creative Landscape”, 2009-2010 [a]

Emerging Voices, The Architectural League of New York, “Emerging Voices spotlights individuals and firms based in the United States, Canada, or Mexico with distinct design voices and the potential to influence the disciplines of architecture, landscape architecture, and urbanism,” 2016

ACSA Design Build Award, March 2013 (first year given)

to the general public. Recognition builds understanding and leads to support for FACT including external donations and grants. **In total, Jeff has earned over 90 design awards including 21 for FACT projects.**

The following summaries of awards and publications highlight the work of FACT and do not include projects designed solely by Actual Architecture Co. or Min | Day.

Popa Newcomb Architecture Excellence Fund, \$12,500 External donor fund established specifically for FACT

Arts & Humanities Seed Grant, \$9,935 research grant: “Sheldon | Life”, 2004-2005

Arts & Humanities Seed Grant, \$9,980 research grant: “Art/Landscape/Architecture”, 2003-2004

Layman Fund award, \$10,000 research grant: “Fabrication Architecture”, 2002-2003

Undergraduate Creative Activities & Research Experiences, research asst. grants, \$75,100 since 2000

Larry Hawthorn Award, 2011

UNL College Distinguished Teaching Award, 2005

Architectural Record Design Vanguard, Dec. 2009 [c]
Emerging Talent, Monterey Design Conference, AIA California Council, 2007

New Practices San Francisco, AIA SF, 2009



[c] FACT recognized by Arch. Record Design Vanguard

Practice Awards

National & Int'l Design Awards



[a]

Progressive Architecture Citation Award (The Grocery), 66th annual P/A Awards, Architect Magazine, Feb. 2019

Interior Design Educators Council Award of Excellence Best in Category: Design as Interior, (FLOCK) 2018

Interior Design Educators Council Award of Excellence Best in Category: Design as Idea (Soft Stones & Stones Table) 2018

ACSA Collaborative Practice Award (Bemis Gardens) 2016 (4 awards given from 50 entries)

AIA National Small Project Honor Award (Bemis InfoShop) 2013

ACSA Faculty Design Award, Honorable Mention (Red Barn Gallery) 2006

ACSA Faculty Design Award (Bemis Framework Plan) 2003 [a]

ACSA Faculty Design Award, Honorable Mention (Windfarmhouse) 2002

Regional Design Awards



[b]

AIA Central States Region Merit Award-unbuilt (The Grocery) 2019

AIA Central States Region Honor Award (Bemis InfoShop) 2010

AIA Central States Region Honor Award (Art Farm Campus) 2010

AIA Central States Region Honor Award (CROPS Food Center) 2010

AIA Central States Citation Award (Art Farm: Red Shed Video Lounge) 2008 [b]

AIA Nebraska Merit Award for Interior Architecture (FLOCK) 2017

AIA Nebraska Merit Award for Unbuilt Architecture (Community CROPS Food Center) 2013

AIA San Francisco Honor Award for Interior Architecture (Bemis InfoShop) 2013

AIA Nebraska Honor Award for Details (Bemis Soft Cube) 2011

AIA Nebraska Merit Award for Extended use / Architectural Detail (Bemis InfoShop) 2010

AIA San Francisco Citation Award for Unbuilt Design (Community CROPS Food Center) 2010

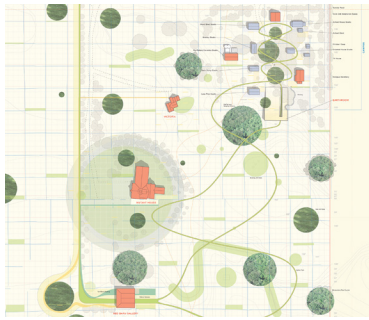
AIA Nebraska Honor Award for Extended Use (Red Shed Video Lounge) 2009

AIA Nebraska Honor Award for Unbuilt Architecture (Okada Ceramics Center) 2007 [c]

AIA Nebraska Citation Award for Unbuilt Architecture (Victoria, Art Farm) 2005

AIA Nebraska Honor Award for Unbuilt Architecture (Red Barn Gallery) 2004

[b] “There is organization in the looseness of this building. It’s very graphic both in concept and presentation and feels alive. It reenergizes the old building, using shipping containers as a nod to the past, but does it all in a non-pretentious way.”



[a] Art Farm framework plan

Publications by Jeffrey L. Day about teaching work



[b]



[c]

Jeff's written work highlights the unique features and transferrable lessons of each student project from the technical advances of digital fabrication and innovative construction systems, to the benefits of unconventional design teams, the open social spaces created, and the value of rigorous detailing and craft. As with awards, publications of design work in journals, on-line magazines, and books build recognition, but with the added benefit of the critical insight and contextualizing efforts of the author. Jeff's work has been featured in *Architect*, *Architectural Record*, *The Architects Newspaper*, *Dwell*,

"Additional Subtractions," *Word Play, An Architectural Compendium*, ed. Margaret Ikeda, Lindsey Peterson, Susannah Meek, and Susi Stadler, Regents of the University of California, April 2015

"The FACTs of Carver Bank," *Good NUz*, Nebraska Alumni Association, Spring 2013, p. 23 [b]

"Surrounded Not Grounded," National Conference on the Beginning Design Student, Lincoln, NE, April 2011

"Post-Agricultural Speculations," *Bracket, On Farming*, Actar Press, October 2010 [a]

"Drawing Lines on the Land," *REVIEW, Urban Stories of Place, Urban Planning & Architecture 2006*, April 2006

"ART FARM | Red Barn Gallery," *Proceedings: 93rd ACSA Annual Meeting*, Salt Lake City, March 2006

Harvard Design Magazine, *Metropolis*, *Metropolitan Home*, *Residential Architect*, and international venues such as *Abitare*, the *BBC*, *C3*, *Summa +*, and more. Features in the local press and on television enhance relationships with the community – this exposure is especially important for the community engagement goals of FACT.

The following list highlights a sampling of publications of work by FACT, 22 additional publications, many in the local press, are not included due to space limitations.

"Two Facts about Landscape in Architecture," *306090 #7*, September, 2004

"Superficial Elements," abstract published in *Proceedings: 19th National Conference on the Beginning Design Student*, Stillwater, OK, April 2003

"Bemis = Art Landscape," *Proceedings: 91st ACSA Annual Meeting*, Louisville, KY, 2003, fall 2004

"Everyday Geometries," with Brian T. Rex, *Journal of Architectural Education 57.2*, 2003 [c]

"Everyday Geometries", with Brian Rex, *Proceedings: 18th National Conference on the Beginning Design Student*, Portland, OR 2002 [c]

"Bounding Space," with Brian Rex, *Proceedings: 90th ACSA Annual Meeting*, Baltimore, 2001

Publications about Jeff Day and FACT

[a] “When I began working at the Bemis Center, I was quite fortunate to discover that Jeff Day was heavily involved with the organization. Jeff was doing high profile work nationally..”- Hesse McGraw, chief curator.

[b] “The interesting thing about our collaborations with Min | Day [and FACT] is that they can happen on multiple levels. It can be a floor plan improvement that costs a few hundred dollars; the Soft Cube, which cost a few thousand dollars; or something much larger, like long-term capital improvements.” “With Jeff, we’ve gotten to the point where the conversation is really seamless.”

Publications of FACT Work



[c] “We have a connection to the project,” he said. “It’s so cool to see something you created in class come to life.” FACT student quoted in Lincoln Journal Star newspaper

Architect, “After Co-Founding a Practice Back in 2003, Jeffrey L. Day Breaks Out on His Own to Start Another, the New Omaha-Based Firm Actual Architecture Co.” by Mackenzie Goldberg, August 6, 2018

Omaha World Herald, “Spaces: ‘A Real Place’ for Dream Projects” by Chris Peters, Feb. 1, 2016, Section E, pp. 1-2

ArchDaily.com, “The Arch. League Announces 2016 Emerging Voices” by Karissa Rosenfield, Feb. 4, 2016

Azure Magazine.com, “Next Generation of Cutting-Edge Architects” by Catherine Osborne, Feb. 3, 2016

The Architects Newspaper, “Emerging Voices 2016 > Min|Day” by Olivia Martin, Issue 2, March 2, 2016, p. 25

San Francisco Cottages & Gardens, “Super Studio: Getting to Know Bay Area Architecture Firm Min|Day” by Lydia Lee, June/July 2016

Flyover Magazine, “Put An Architect in a Corner: Talking Design Philosophy with Architect Jeff Day” by Stephen Prince, Premier Issue 2015 pp. 62-66

Lincoln Journal Star, “UNL-designed ‘kite cloud’ could provide relief for Jazz in June”, (Kite Cloud by FACT) by Chris Dunker, June 25, 2018 [c]

Sheridan County Journal Star, “Graduate Students Plan to Transform Rushville Grocery Store into Gallery/Cultural Center” by Lauren Brant, Jan. 31, 2018 [b]

Lincoln Journal Star, “Coming to a Neighborhood Near You: Housing Nonprofit, UNL Class Eyed Affordable Residential Alternative” (Box House One) by Kevin Abourezk, December 4, 2015, Section B, pp. 1-2 [c]

Lincoln Journal Star, “UNL Architecture Professor’s Firm Envisions Future for East Lansing” (concerning Gather/

B2B Magazine, “Controlled Chaos: Architect Jeff Day”, by Lisa Lukecart, Summer 2015, pp54-57

Omaha World Herald, “Architects are Wave of Future”, by John Pitcher, Jan. 3, 2010

Omaha Weekly Reader, “Easy Being Green”, Sally Deskins (FACT: Art Farm & Bemis) July 23, 2008
Architectural Record, Design Vanguard 2009, by Mae Ryan, Dec. 2009 [c]

Abode, Issue 51, “Q & A with Jeff Day” by Holly Nowikowski, Print Com., Doha, Qatar 2009

Residential Architect, “A Matter of Fact” (interview with Jeff Day about FACT at Art Farm), by Meghan Drueding, August 2008

Architectural Record, “Mutual in Omaha and San Francisco”, (archrecord 2 feature on Min|Day + FACT), by Kevin Lerner, August, 2003

Grow/Make/Live/Play for East Lansing 2030: Collegeville Re-envisioned) Nov. 6, 2014

(book) *The Power of Pro-Bono*, (Soft Cube), John Cary, ed. Metropolis Books, October 2010 [a] [b]

Omaha World Herald, “Shed your rigid ideas about ‘art’”, Dane Stickney (Art Farm @Sheldon) Jan. 6 2008

Review, “Open At The Bemis”, Kansas City, Sept/Oct 2002

Omaha World Herald, “Blueprint for the future”, Ashley Hassebroek (Bemis Center) Sept. 22, 2002

DAKE | WELLS
architecture

August 6, 2020

AIA Nebraska Award for Architectural / Design Education Jury
AIA Nebraska
335 N. 8th Street, Ste. A
Lincoln, NE 68508

Re: Reference Letter for Jeffrey L. Day, FAIA

Dear members of the AIA Nebraska Jury,

It is my distinct honor and pleasure to offer this enthusiastic letter of support for Jeffrey L. Day, FAIA. Jeff has developed a remarkable body of work from the center of the country with a practice that engages students, communities and craftsmen in a collaborative design process as a way to inform, educate and challenge conventional approaches to both teaching and practice.

Jeff embodies the values of the citizen architect in his relentless commitment to architectural education through practice of the highest order. His approach blurs the lines between practice and academia, each learning from the other for the benefit of student and teacher, institute and community. He is transforming the paradigm of the design-build experience in architectural education, teaching students to collaborate with fabricators, craftsmen, clients, and communities in real world scenarios that place the student as design leader rather than a singular tradesman, as is the case in most design-build experiences. His approach prioritizes the collaborative nature of our profession, teaching students to respond to ever changing circumstances without compromising design excellence.

I first became aware of Jeff Day through his published work in *Architectural Record* and *Residential Architect* magazine prior to us sharing the microphone at a symposium hosted by Drury's Hammons School of Architecture entitled *Design in the Middle: Making Place in the American Small Town*. I was impressed by Jeff's remarkable skills as manifest in the Bemis InfoShop, a crisp insertion that respects and responds to its specific circumstance, and its exploration of material, fabrication technique and bold aesthetic. Experiencing the work in person, I gained even greater appreciation for the level of craft executed with ordinary materials to create an iconic, albeit modest, public space. It was no surprise to see it receive an AIA National Small Projects Award, AIA Central States Award, and many others.

Jeff passionately shares his perceptive views of the important relationship between education and practice, noting the collaborative experience with students the Bemis project underwent. When Jeff invited me to participate in student reviews with him at UNL, I jumped at the chance to see how he works. In the studio, Jeff is thoughtful, respectful and gracious in his analysis of the work of others, while maintaining a critical eye for excellence. Always optimistic, Jeff challenges others to achieve more than they themselves thought possible.

Jeff also teaches by example. His design for the Blue Barn Theater in Omaha is a stunning project that embraces the notion of architecture without preciousness, instead providing a canvas for creative interventions by others. Its director, Susan Clement-Toberer beamed with pride as she told me the story of working with Jeff and other collaborative artists to realize her dreams for a contemporary theater experience outside of New York City.

Jeff's talent is rare, in an area of the country often overlooked and characterized for being insulated, or close-minded. Indeed, Jeff is leading the way in not only aesthetic experimentation, but socially and environmentally responsible design and advocacy. His sensitive work connects people to place and to one another, strengthening relationships and uplifting the human spirit. Jeff sees architectural education as more than teaching the discipline of design, but also of empathy, respect and civil discourse. The ripple effect of his contributions can be seen in the leadership of former students across the country like Matt Deboer, AIA, recipient of the 2018 AIA Young Architect Award, who is now moving the needle on issues of civic engagement, sustainability, and design.

Jeff Day is an innovative educator and accomplished practitioner embracing his responsibility as an architect to make our world a better place, through advocacy, relationships and education. He has been named an Emerging Voice by the Architectural League of New York, and received the Collaborative Practice Award from ACSA. Jeff has inspired countless others to be better, to do more, to encourage others, and to strengthen our communities. His contributions to profession of architecture and society are exemplary and a model for us all. It is with utmost enthusiasm that I support Jeffrey Day for this honor.

Sincerely,



Andrew Wells, FAIA, LEED AP
Design Director and Co-Founder
Dake Wells Architecture



August 10, 2020

AIA Nebraska Award for Architectural / Design Education Jury
AIA Nebraska
335 N. 8th Street, Ste. A
Lincoln, NE 68508

RE: Reference Letter for Jeffrey Day, FAIA

Dear members of the AIA Nebraska Jury,

It is with a great deal of respect and admiration that I write this letter of support for Mr. Jeffrey L. Day, FAIA, Founder of Actual Architecture Co. I am writing from the perspective of a former student of Jeff's at the University of Nebraska-Lincoln, an alumnus of his award-winning Fabrication and Construction Team (FACT) program and a professional peer who has collaborated with Jeff to advance an appreciation for architecture in the Midwest.

Jeff is one of the foremost design leaders in the Midwest and an individual who has demonstrated great impact in both the built environment and in academia. I have personally witnessed and benefited from his leadership in both realms as have hundreds of my colleagues—here at HDR and at many other firms in our region. As a member of the 2008 FACT team, I took part in repurposing a 100-year-old shed into a very popular exhibit at the Sheldon Art Gallery in Lincoln, Nebraska. Under Jeff's guidance, the Art Farm project was a truly transformational experience in my education, underscoring the importance of teamwork to solve a complicated design-build challenge.

Many of the built projects that have come from the FACT program, including the Bemis Soft Cube, Bemis InfoShop and the Art Farm, are at the forefront of the design dialogue in Nebraska. During my tenure as a Director on the AIA Omaha Board, we regularly hosted numerous events in spaces that FACT teams built. These spaces have been instrumental in demonstrating the value of thoughtful and beautiful design both to the profession and to the general public.

Recently, both Jeff (ex-officio, College of Architecture) and I (AIA Omaha President) served on the AIA Nebraska Board together. His leadership was invaluable to that collaboration, allowing us to strengthen the connection between the AIA and the College of Architecture by opening avenues for dialog about pedagogy, increasing professional engagement in the College, and working to form partnerships for students and faculty with firms. He was also a very important contributor to my successful run for the AIA Young Architects Award, which is a testament to his support for his former students and continued mentorship post-graduation. In fact, I consider Jeff a life-long mentor, and am grateful for his encouragement to expand the boundaries of my architecture career.

For the above reasons cited here and others, I am pleased to recommend Jeffrey L. Day, FAIA, I support his candidacy without reservation. The impact Jeff has made through both academia and practice is far-reaching and I know that there are many practicing architects who, like me, have been inspired by his dedication to students, to our profession, and have benefited from his ability to cultivate a new generation of leaders.

Sincerely,

Matthew DeBoer, AIA, NCARB
Vice President, Managing Principal
Treasurer, AIA Nebraska
Past President, AIA Omaha

hdrinc.com

1917 South 67th Street, Omaha, NE 68106